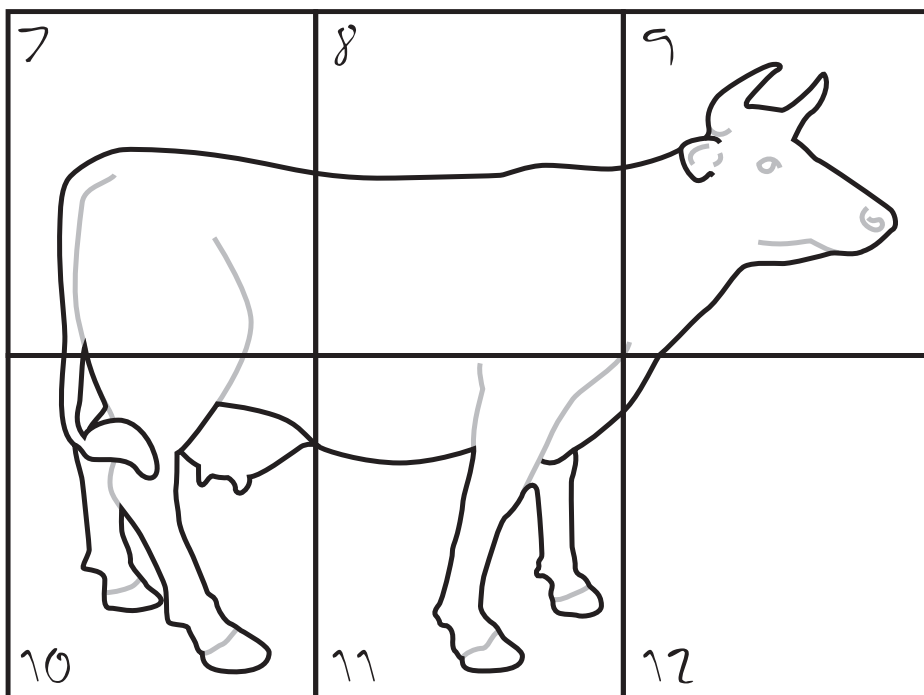
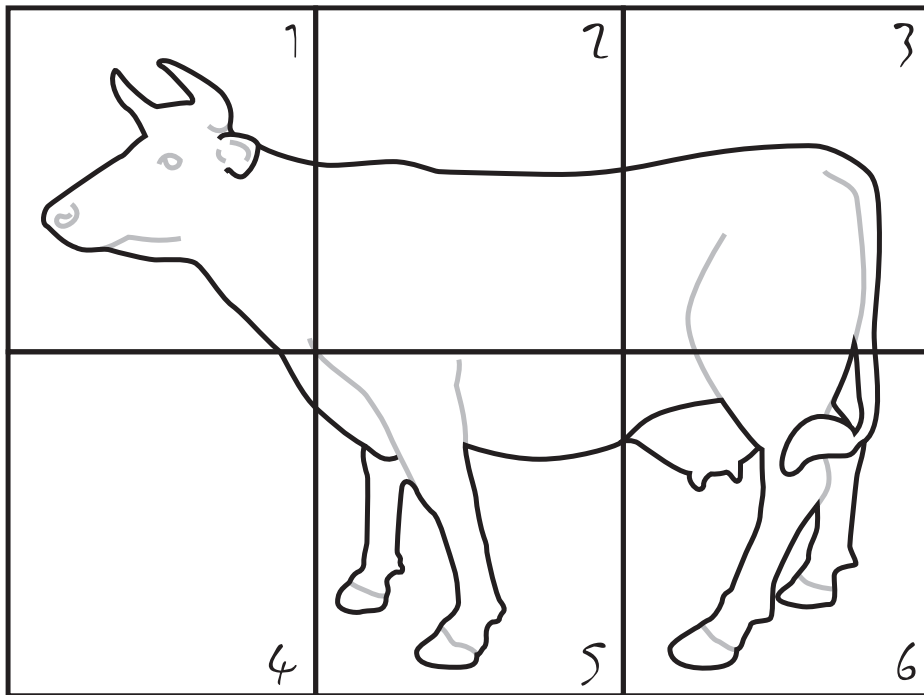
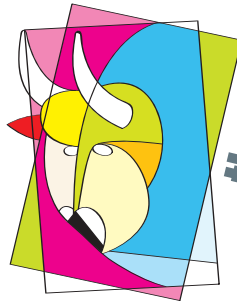


the **ARCHIBULL** PRIZE

Planning Templates

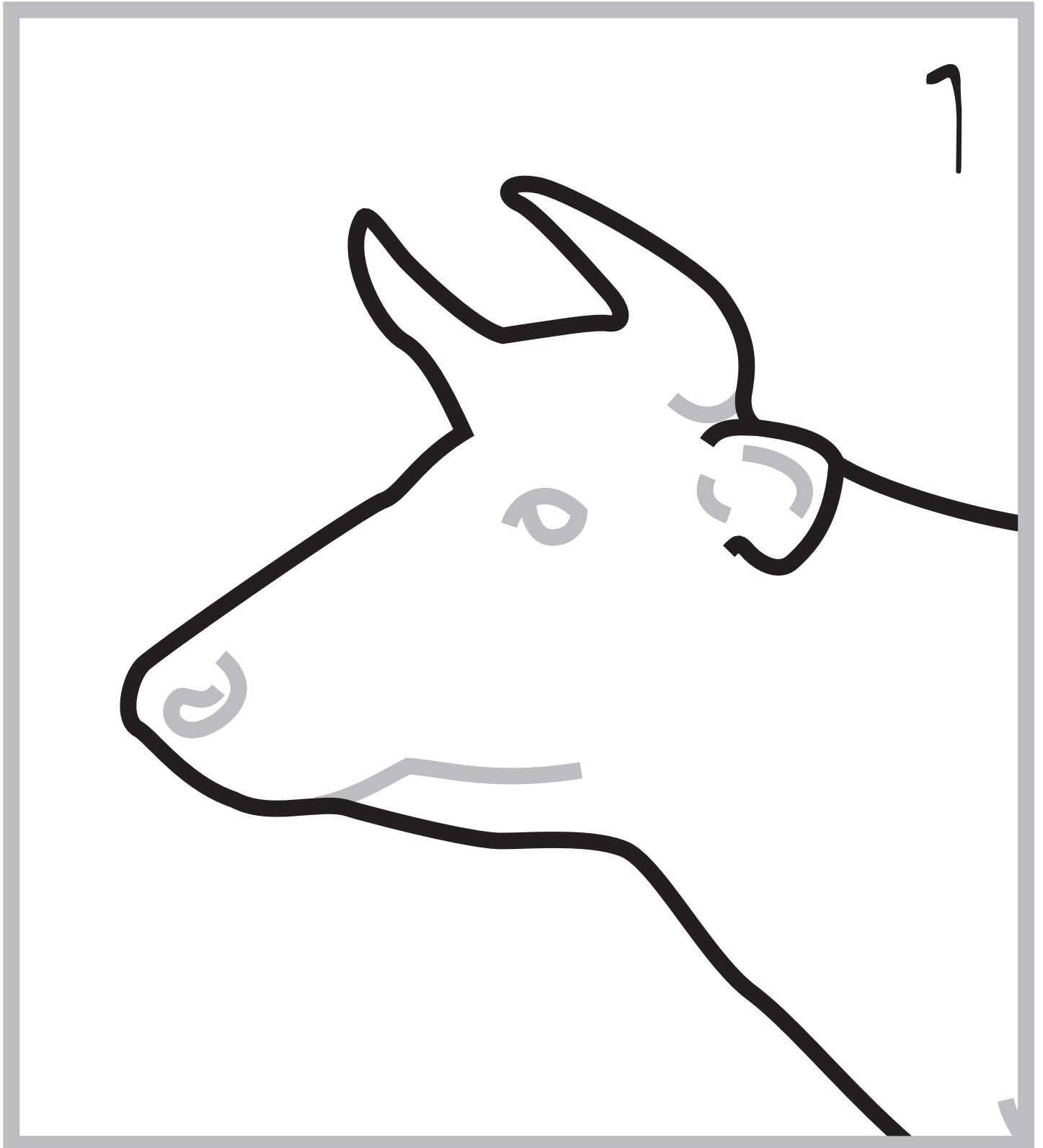
Use the A4 templates for 'whole-bull' planning, and the 12-page bull template, photocopied to A3 size at 150%, for designing, drawing, drafting and discussion.

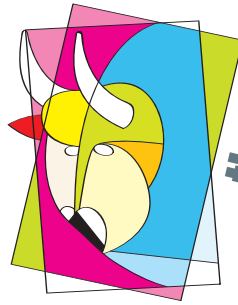




the **ARCHIBULL** PRIZE

Copy from to A4 to A3 by magnifying to 150%. Join the pieces to make a large bull template for students to design, draw, draft and discuss.



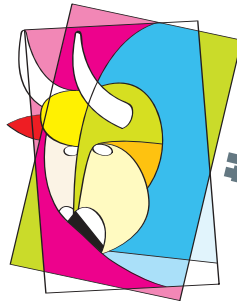


the ARCHIBULL PRIZE

Copy from to A4 to A3 by magnifying to 150%. Join the pieces to make a large bull template for students to design, draw, draft and discuss.

2

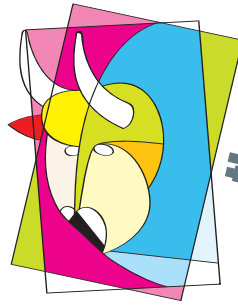




the **ARCHIBULL** PRIZE

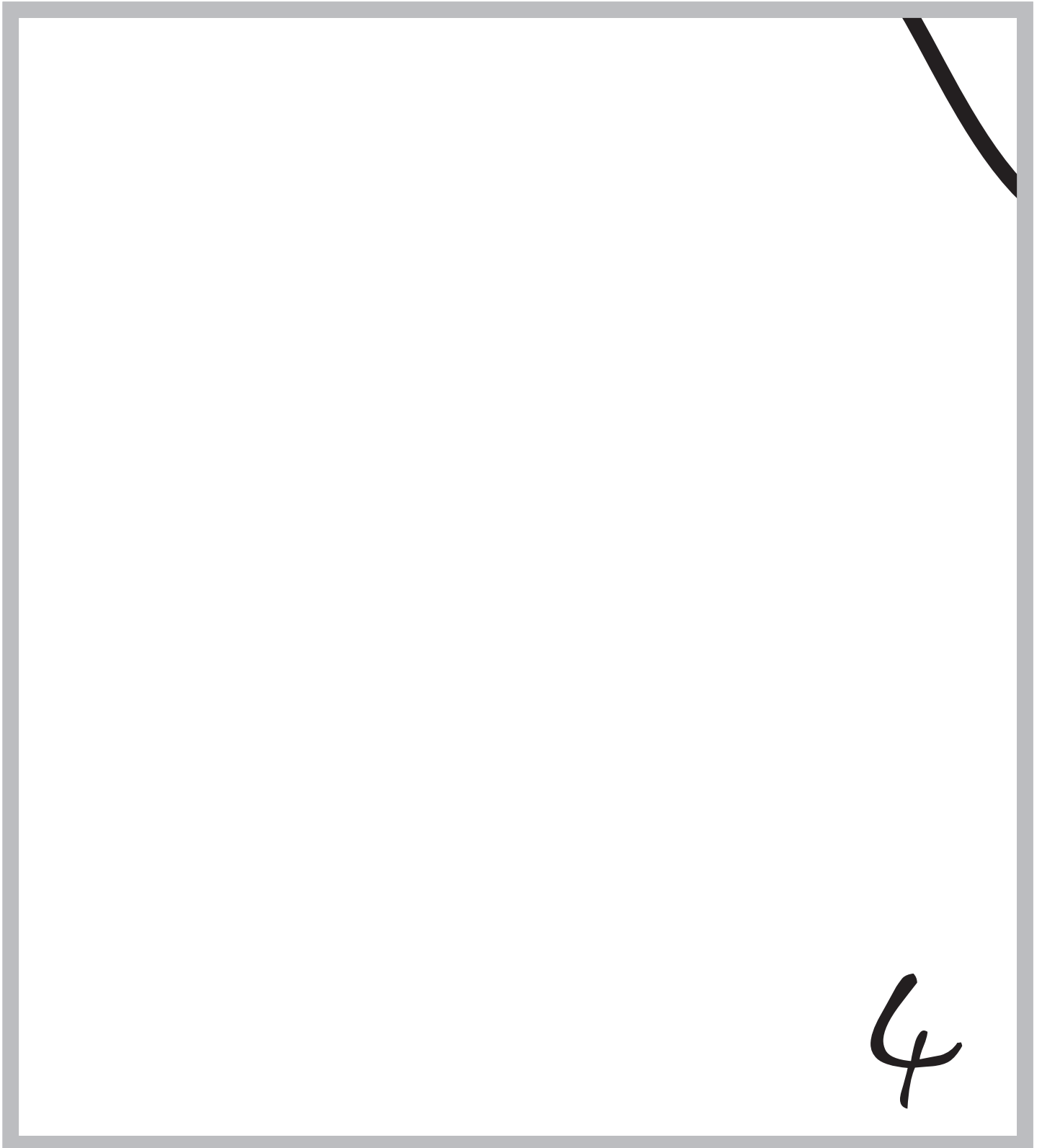
Copy from to A4 to A3 by magnifying to 150%. Join the pieces to make a large bull template for students to design, draw, draft and discuss.



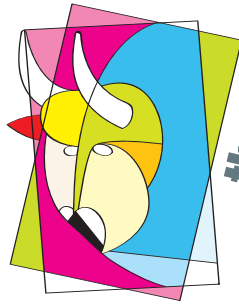


the ARCHIBULL PRIZE

Copy from to A4 to A3 by magnifying to 150%. Join the pieces to make a large bull template for students to design, draw, draft and discuss.



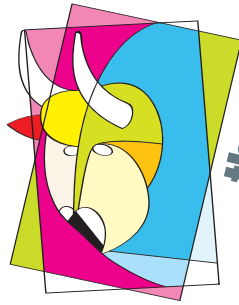
4



the ARCHIBULL PRIZE

Copy from to A4 to A3 by magnifying to 150%. Join the pieces to make a large bull template for students to design, draw, draft and discuss.

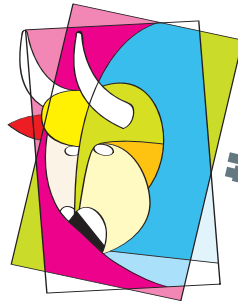




the ARCHIBULL PRIZE

Copy from to A4 to A3 by magnifying to 150%. Join the pieces to make a large bull template for students to design, draw, draft and discuss.

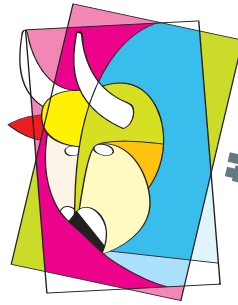




the ARCHIBULL PRIZE

Copy from to A4 to A3 by magnifying to 150%. Join the pieces to make a large bull template for students to design, draw, draft and discuss.



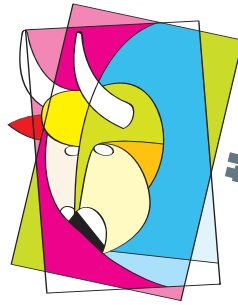


the ARCHIBULL PRIZE

Copy from to A4 to A3 by magnifying to 150%. Join the pieces to make a large bull template for students to design, draw, draft and discuss.

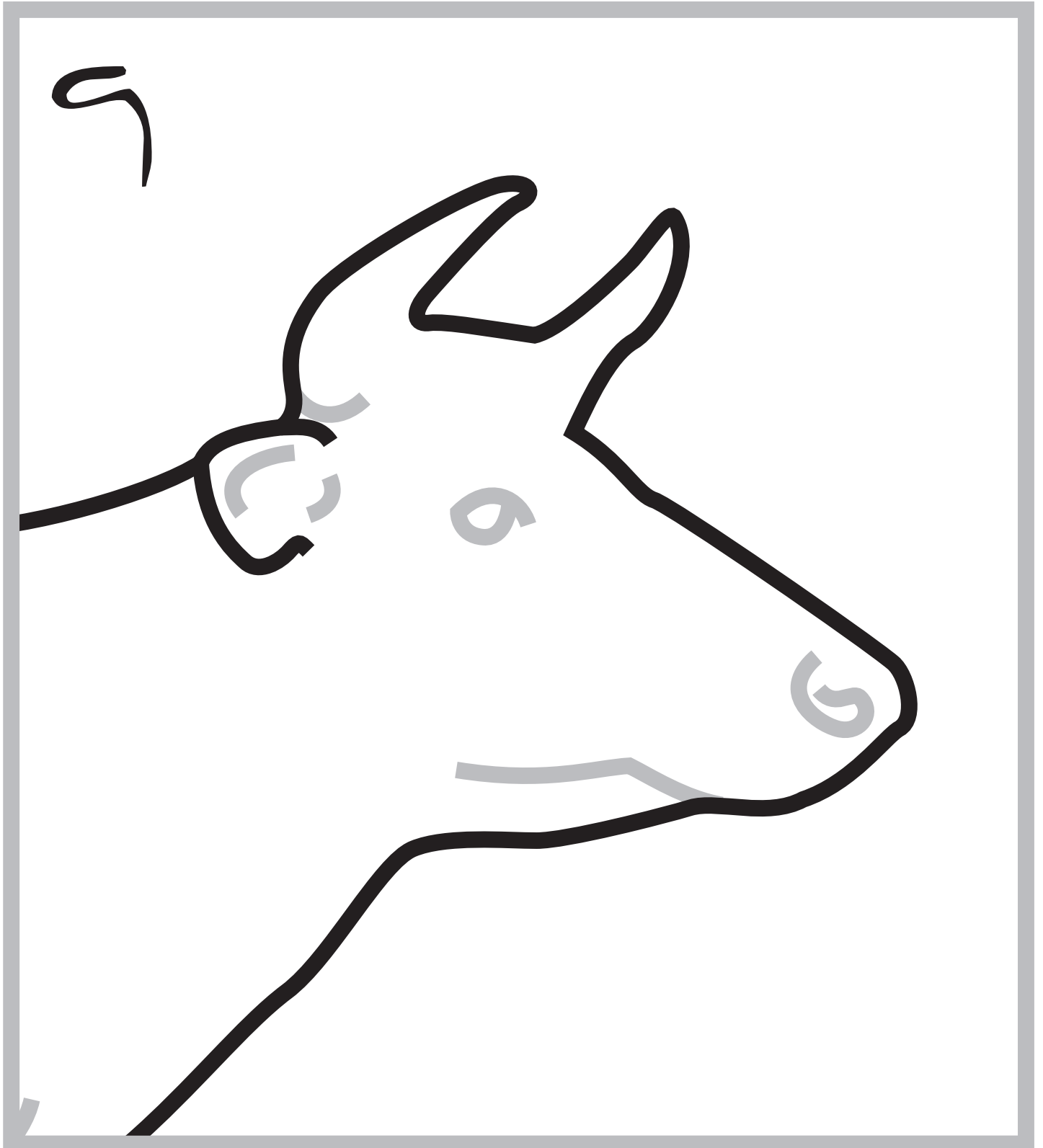
8

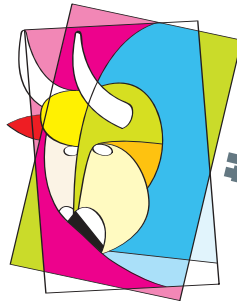




the **ARCHIBULL** PRIZE

Copy from to A4 to A3 by magnifying to 150%. Join the pieces to make a large bull template for students to design, draw, draft and discuss.

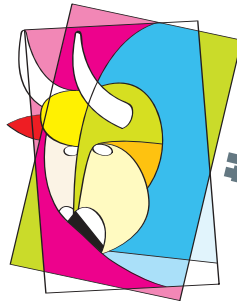




the ARCHIBULL PRIZE

Copy from to A4 to A3 by magnifying to 150%. Join the pieces to make a large bull template for students to design, draw, draft and discuss.

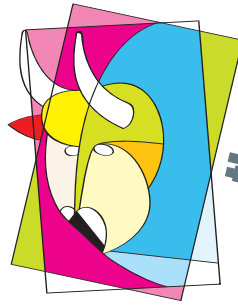




the ARCHIBULL PRIZE

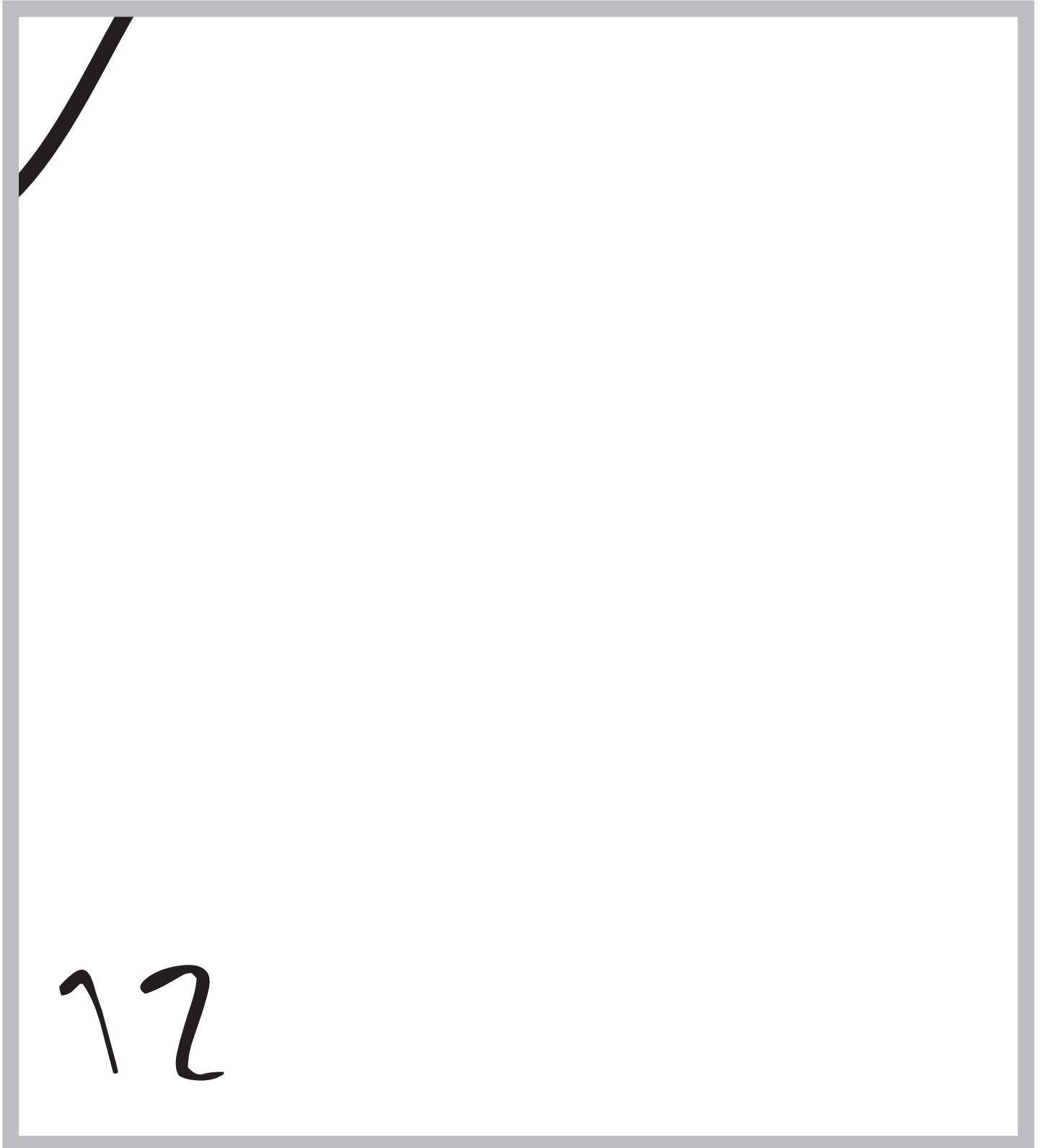
Copy from to A4 to A3 by magnifying to 150%. Join the pieces to make a large bull template for students to design, draw, draft and discuss.

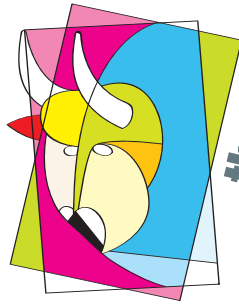




the ARCHIBULL PRIZE

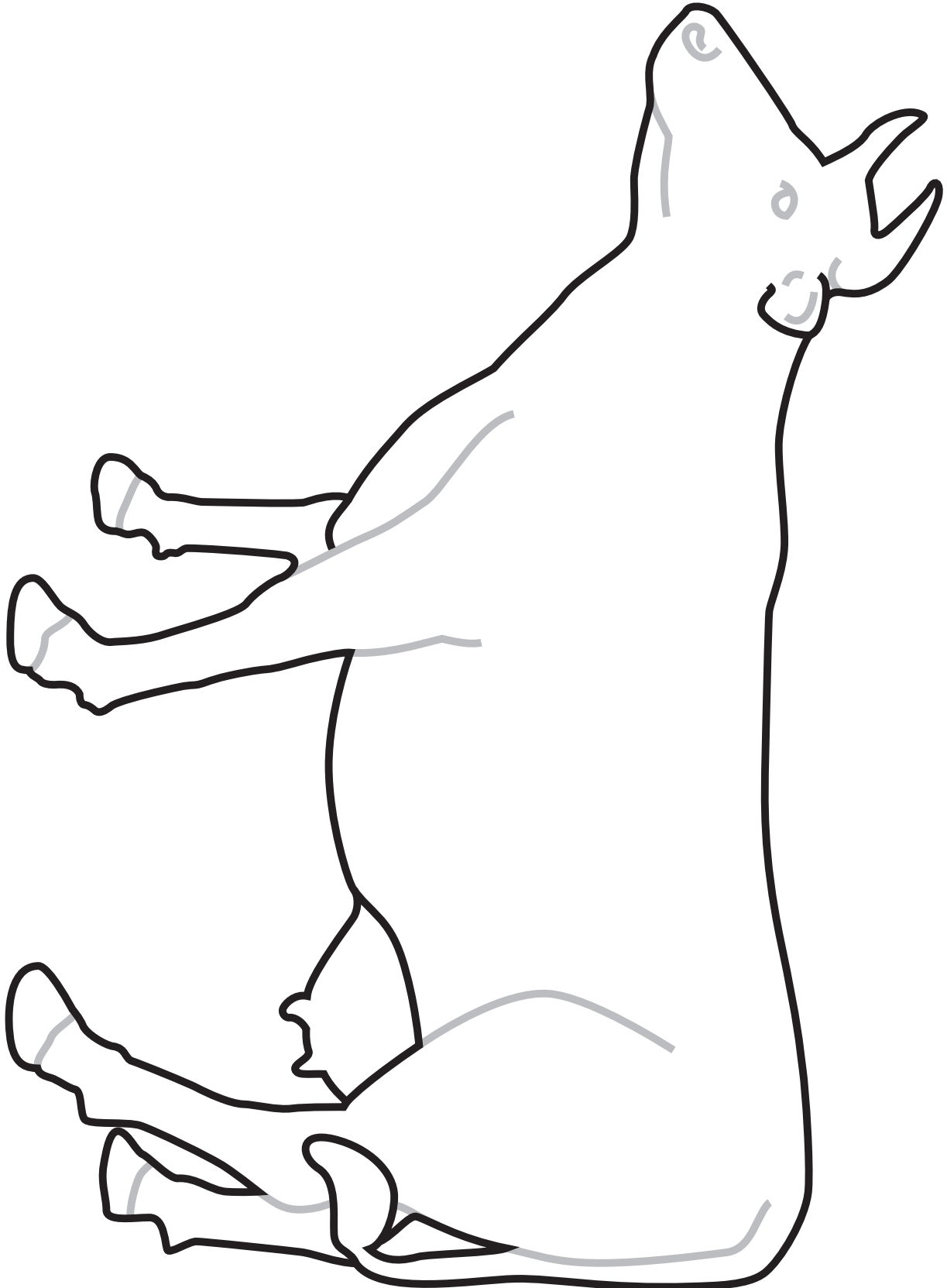
Copy from to A4 to A3 by magnifying to 150%. Join the pieces to make a large bull template for students to design, draw, draft and discuss.

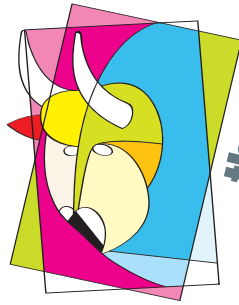




the ARCHIBULL PRIZE

Use the A4 templates for 'whole-bull' planning.





the ARCHIBULL PRIZE

Use the A4 templates for 'whole-bull' planning.

